

INSTALLATION INSTRUCTIONS

M•Caster STUDIO Firmware Update • March 2023

Introduction

These installation instructions describe how to update the M•Caster STUDIO firmware to the latest version.

System Requirements

- Windows 10 or higher required
- macOS 10.12 or higher required

Supported Devices

- M•Caster STUDIO

Installation Instructions

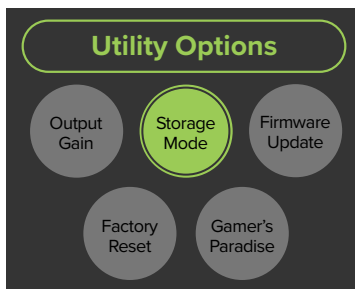
In order to update the M•Caster STUDIO with the latest firmware, first navigate to Utility > Storage Mode.

Utility – Storage Mode:

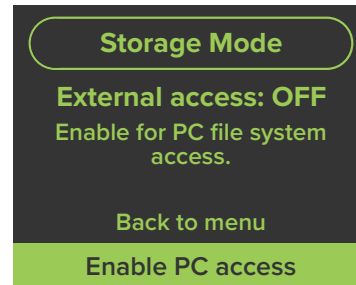


'Storage Mode' and 'Firmware Update' work together, so we'll cover what they are and how to perform a Firmware Update utilizing both.

'Storage Mode' is the place to select whether M•Caster Studio has control over the cache storage (INTERNAL) or if a computer does (EXTERNAL).

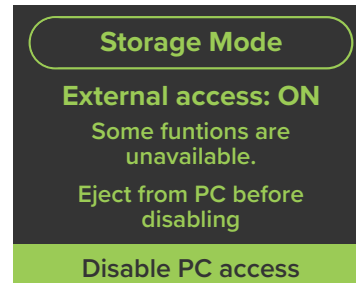


In INTERNAL mode, M•Caster Studio has read and write access over the file system, can play samples from memory and update any parameters. This is the default setting. When 'Storage Mode' is tapped, notice that EXTERNAL access is OFF.



In EXTERNAL mode, the computer has (almost) complete control over the M•Caster Studio. You can still mix audio from connected devices, but you are locked out of sample playback and editing/changing parameters. Rotate and select 'Enable PC access' to switch from M•Caster Studio (INTERNAL) to computer (EXTERNAL).

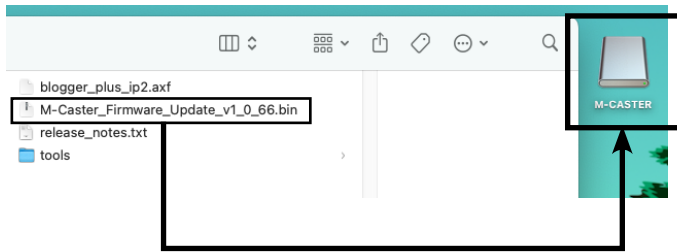
Notice below that EXTERNAL access is now ON!



The first thing you may notice, though, are all the flashing LEDs. Do not fret, this is ok... this is supposed to happen! Did you push a sample pad, input selector switch, home and/or settings switch with no result? That is ok, too. The one thing that does work is pushing the navigation knob down. Please do NOT do this until you have "ejected" the drive from the computer. More on this shortly.

Our goal now is to load the latest firmware on to M•Caster Studio. While the LEDs continue to flash, go to the [Mackie website](#) to check for the latest firmware. Download and save the file to the computer's desktop. Unzip the file and open the folder.

There should be a file called something similar to 'M-Caster_Firmware_Update_v1_0_67.bin' within the folder. This folder may be dragged-and-dropped into the EXTERNAL – i.e. computer's – 'M-CASTER' cache.

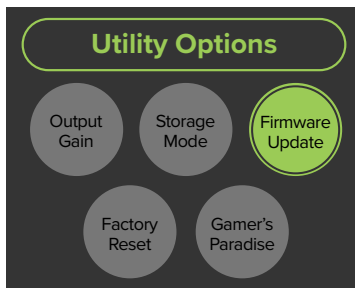


Once completed, we can now (1) eject the drive – right-click, eject 'M-CASTER'; the external drive should disappear from the desktop to confirm success and (2) disable PC access – press the navigation knob down.

Everything is almost back to normal... except we still need to add the updated firmware to the M•Caster Studio. After returning to the main menu, select Utility > Firmware Update.

Utility – Firmware Update:

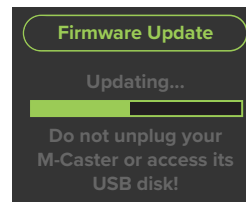
'Firmware Update' is the place to view the current version of firmware, and, if available, the place to download the latest firmware on to M•Caster Studio.



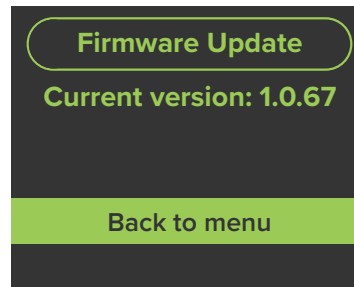
As seen below, an update is available! Simply push the navigation knob down when 'Start update' is highlighted.



As you might imagine, we do not want you pushing any buttons, twiddlin' any knobs or (by no means) unplugging the M•Caster Studio! The update does not take long, so please be patient.



The next time you return to Utility > Firmware Update, it should look a little something like this:



As you can see, there is nothing to do other than return back to the main menu.

Technical Support

Please contact our splendid Technical Support heroes if you have any questions.

Web: <http://www.mackie.com/support>

Phone: 800-898-3211
425-487-4333

During normal business hours, Monday-Friday, Pacific Time.